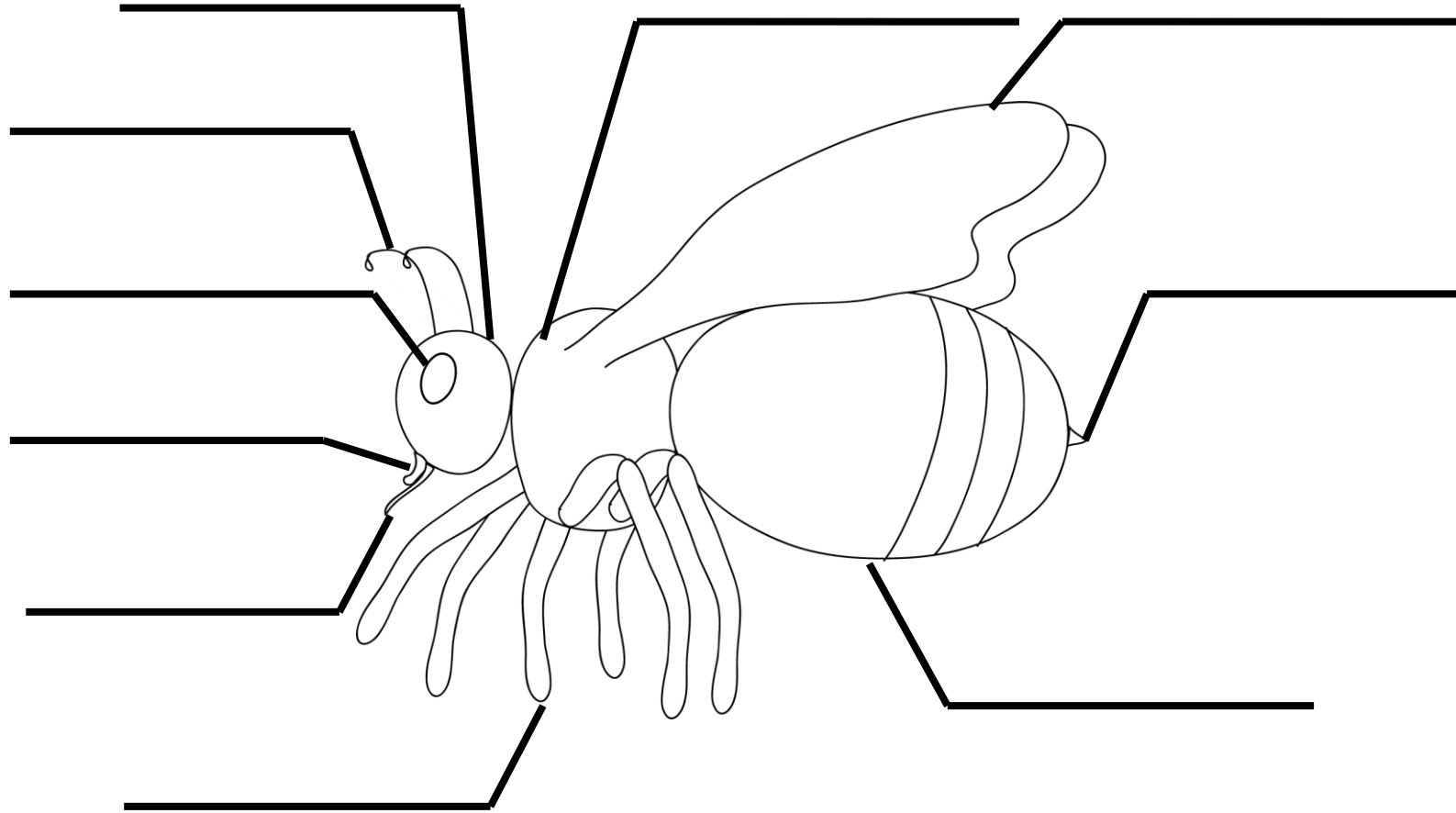


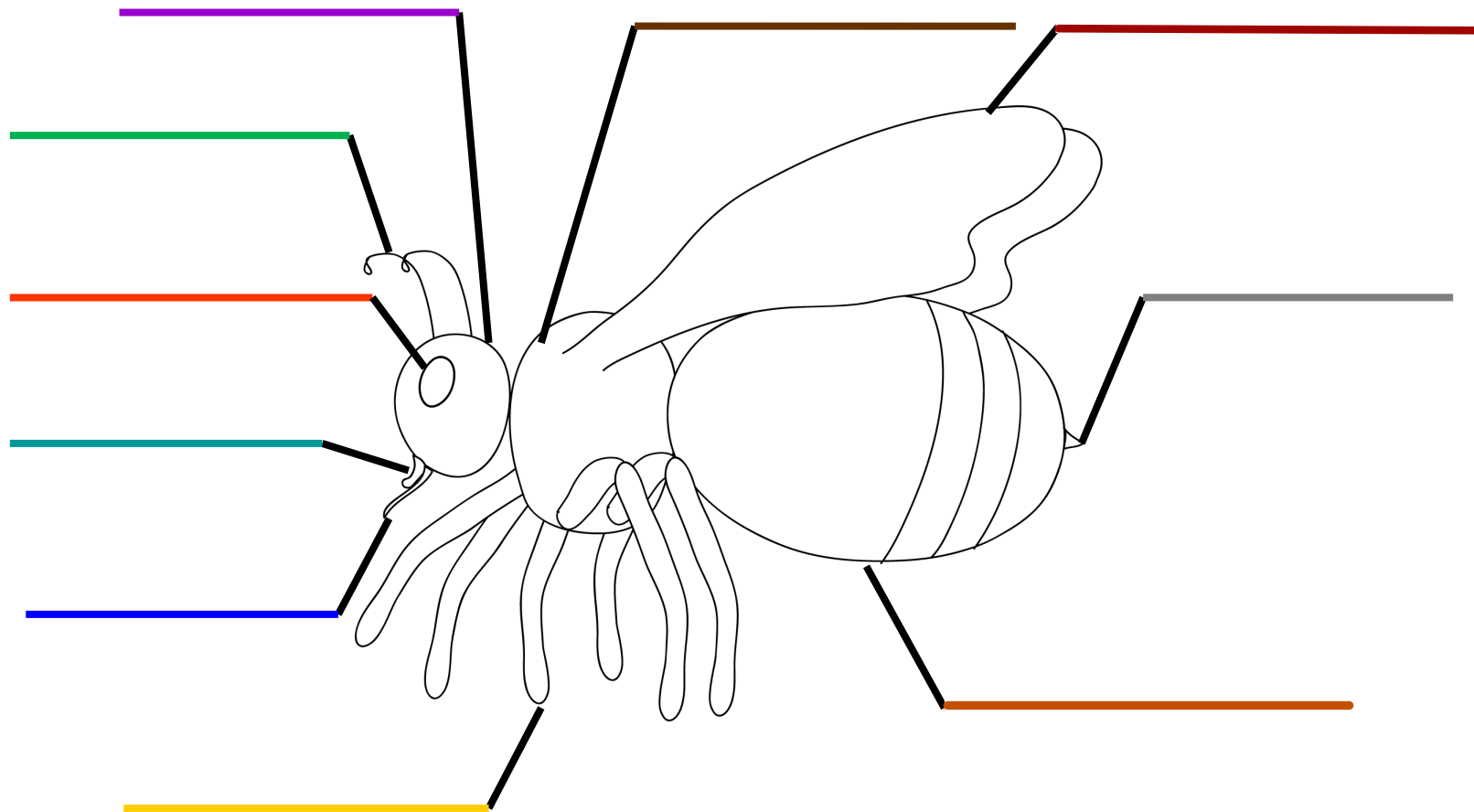
Black Master Label the HoneyBee



Wings	Eye	Legs	Antenna	Proboscis
Head	Thorax	Abdomen	Stinger	Mandible

Color the honeybee, cut the labels and glue to the corresponding parts.

Color Master Label the HoneyBee



Wings	Eye	Legs	Antenna	Proboscis
Head	Thorax	Abdomen	Stinger	Mandible

Color the honeybee, cut the labels and glue to the corresponding parts.

Learning About the Parts of a Bee

Honeybees are social insects that have six legs, a three-part body, a pair of antennae, compound eyes, jointed legs, and a hard exoskeleton.
The three body parts are the head, thorax, and abdomen (the tail end).



Head: Contains the bees brain and sensory organs

Eyes: Bees have 2 large compound eyes made of lots of different parts that transmit visual information to the brain. They also have 3 simple eyes called Ocelli on the top of their head in the shape of a triangle.

Antennae: (Antenna-singular) Sensory organs that help bees smell

Proboscis: A long tongue that unrolls and allows bees to drink nectar like a straw

Mandible: Used to collect pollen, feed larvae, manipulate wax, and carry things

Thorax: The middle part of the bee

Wings: They have two sets of wings (4 total), a Forewing (large) and a Hindwing (small)

Legs: Bees have 3 sets of legs (6 total) and are used to move and carry pollen

Abdomen: Contains the digestive and reproductive organs

Stinger: A hard plated part of the bee containing a poison sac. Not all bees have stingers.



Invite your child to color the bee

